

A Low Carbon Concrete Success Story for Precast / Prestressed Concrete Producers

Collin Bender
Conewago Manufacturing

Thank You for Joining Our Webinar!

- You will be muted
- Webinar recording will be shared
- For best results, use high-speed internet
- Chat window on lower right
- Q&A and survey at the end



Disclaimer: This webinar is provided for general information purposes only and does not constitute legal or professional advice. No user should act on the basis of any material contained in the webinar without obtaining proper professional advice specific to their situation.

Meet the Speaker



Collin Bender

QC Manager
Conewago Manufacturing

CONEWAGO
MANUFACTURING, LLC



The History



Donald B. Smith

CEO, President
Conewago Enterprises, Inc.



Conewago's Path to Low Carbon Concrete

- CarbonCure supplier since Feb. 2020
- 1261 metric tons of CO₂ saved to date
 - 191 metric tons of CO₂ saved in Precast alone
- 3% reduction of cement Precast
- 5% reduction of cement Ready Mix

How it Works: CarbonCure Precast

Seamless retrofit technology that operates with no disruption to batching procedures



Installation

- CarbonCure installs its proprietary retrofit equipment (1 day)
- CarbonCure optimizes the CO₂ injection rate



Integration

- Batching integrated with batch operations system
- Automated CO₂ dosage



Injection

- Central mix: CO₂ snow injected into mixer during batching sequence
- Dry batch: CO₂ snow injected into mouth of truck near the end of the load

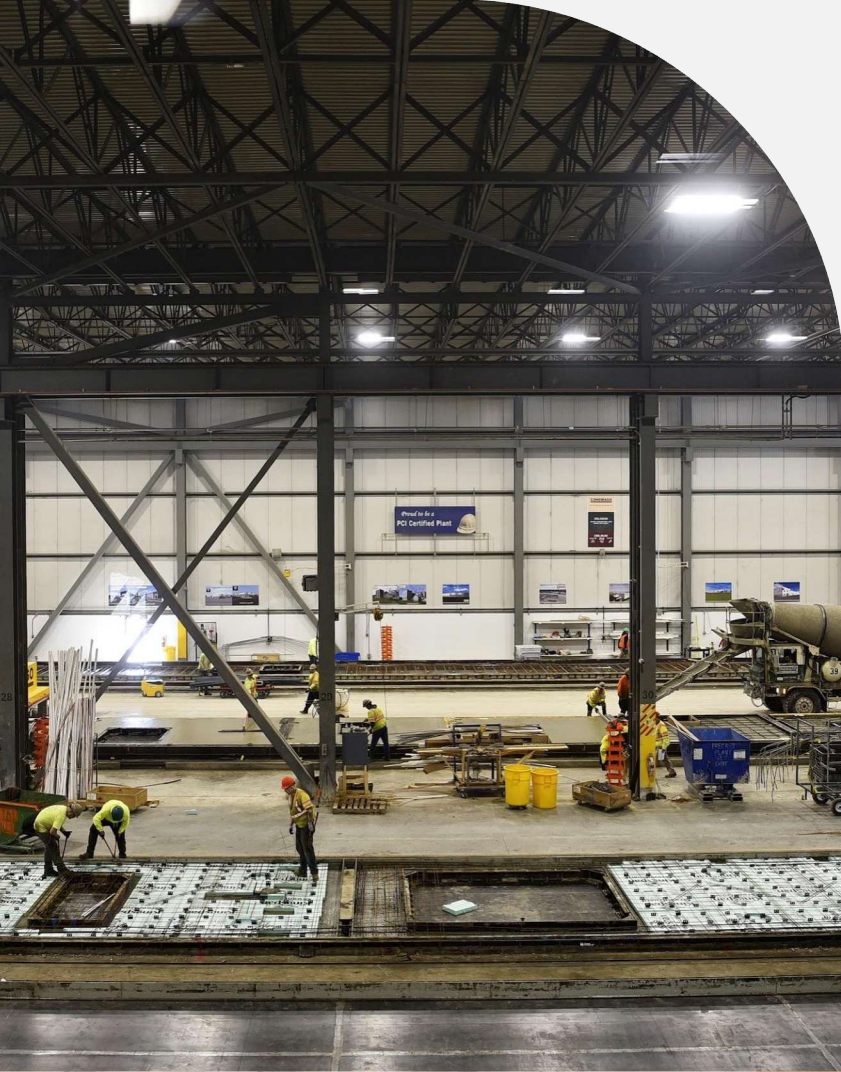


Support

- Remote telemetry for customer support
- Real-time system monitoring
- Toll-free technical support line

A black and white photograph of a vast industrial manufacturing facility. The image shows a long, open space with a high ceiling supported by a complex network of steel trusses and beams. The floor is covered with various materials, including what appears to be a grid of rebar for a concrete slab. In the foreground, there are stacks of materials and some equipment. In the background, a large concrete mixer truck is visible, with the word "PHOENIX" on its side. The overall atmosphere is one of a busy, large-scale industrial environment.

131,000 sq ft Manufacturing Facility



High quality, low embodied carbon concrete products, including:

- Beams
- Columns
- Solid and insulated structural and architectural precast wall panels

Conewago Reference Project:

Dick's Sporting Goods

"It is great to be able to reduce the carbon footprint of this structure and others, by providing high quality precast and ready mix embodied carbon concrete through the use of CarbonCure."

Collin Bender, QC Manager, Conewago Manufacturing

Tenant:
Dick's Sporting Goods

Concrete Supplier:
Conewago
Manufacturing

Concrete Supplied:
451 yd³

Contractor:
Conewago Enterprises

Structural Engineer:
Thorson Baker &
Associates

Architect:
Fox Design Group

Est. CO₂ Savings:
4.7 metric tons
(10,373 lbs)

**CO₂ Savings
Equivalent:**
5.5 acres of forest
absorbing CO₂ per year





Conewago Reference Project:

Aquaphoenix Scientific Hanover, PA

Owner:
Aquaphoenix
Scientific

**General
Contractor:**
Conewago
Enterprises

**Design Engineer,
Architectural &
Structural**
Wolf Consulting
Engineers





**Total CarbonCure
Concrete Used:**
802.5 yd³

CO₂ savings:
8.4 metric
tons (18,458
lbs)

CO₂ Savings Equivalent:
9.8 acres of forest
absorbing CO₂ per
year

Thank You!

Questions?

 @CarbonCure
 CarbonCure-Technologies
 CarbonCure.Technologies
 @CarbonCure

 **CARBON
CURE™**
www.carboncure.com

Join Our Upcoming Webinar!

Link to register in the chat!

FREE LIVE WEBINAR

JUNE 23, 2022 10:30 AM PT | 1:30 PM ET

**The Impact of Federal
Buy Clean Requirements
on the Concrete Industry**

